

Providing Traffic Engineering Services:

- *Traffic Safety Studies*
- *Speed Studies*
- *Posted Roadway (weight limit) Determination*
- *No Parking Restriction*
- *Sight Distance Study for Obstruction Removal*
- *Multi-Way Stop*
- *One-Way Traffic*
- *Hazardous Grade Speed Limit Study*
- *Ball Banking of Curves for Advisory Signing*
- *Traffic Signal Warrant Study & Design*
- *“Jake Brake” Restriction*
- *Guiderail Warrant Study and Design*
- *Road Safety Audits*



Prior to co-founding Wentz & Webster, LLC, Timothy Wentz, P.E. was PennDOT District 3's Traffic Safety Engineer. He managed over 150 traffic studies performed by consultant and in-house staff annually, and he has provided technical assistance to several municipalities.

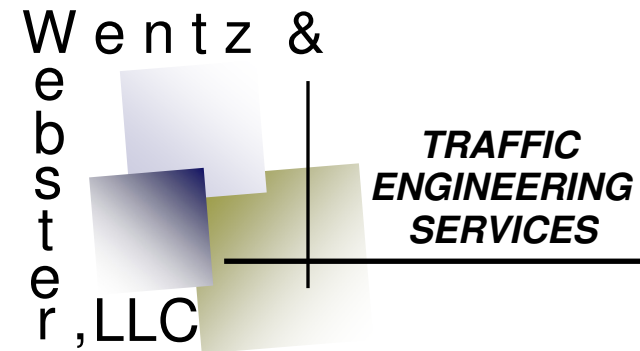
He managed over 150 traffic studies performed by consultant and in-house staff annually, and he has provided technical assistance to several municipalities.

Wentz & Webster, LLC

Timothy M. Wentz, P.E.
191 Cain Lane
Muncy, PA 17756

Phone: (570) 940-0333
Fax: (570) 546-3153
E-mail: timwwe@windstream.net

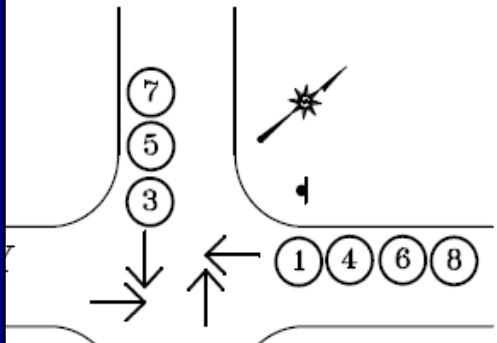
www.WentzAndWebster.com



**AND
CHECK OUT
OUR
SERVICES!**

WHY ARE TRAFFIC STUDIES IMPORTANT?

CRASH DIAGRAM



Improve Safety

Establish Enforceable Limits

Limit Tort Liability Exposure

Maintain Efficient Traffic Flow

SAFETY AND REGULATORY STUDIES

Traffic Studies are necessary for the placement of regulatory signing such as Multi-Way Stop, Speed Limits, One-Way, Parking Restrictions, etc...

These studies are necessary for safe and efficient traffic flow as well as ensuring that citations will be upheld in court.

Traffic Studies should be conducted for Advisory Conditions such as determining the correct type of sign installation as well as the advisory speed posting like pictured below.

A traffic study ensures motorists are properly advised of conditions such as sharp curve or intersections with inadequate sight distance thereby Limiting Tort Liability Exposure.



HAZARDOUS OBJECT REMOVAL STUDY



Inadequate sight distance is a major contributor to traffic crashes.

Municipalities have the legal authority to require a landowner remove a tree or other obstruction from their property in a timely manner. The removal is enforceable by fines set forth in the vehicle code if they fail to comply.

A traffic study is first required to deem the object a "hazard".

We encourage that every effort be made to peaceably settle the matter, however, we will provide the necessary documentation if landowner refuses to comply.